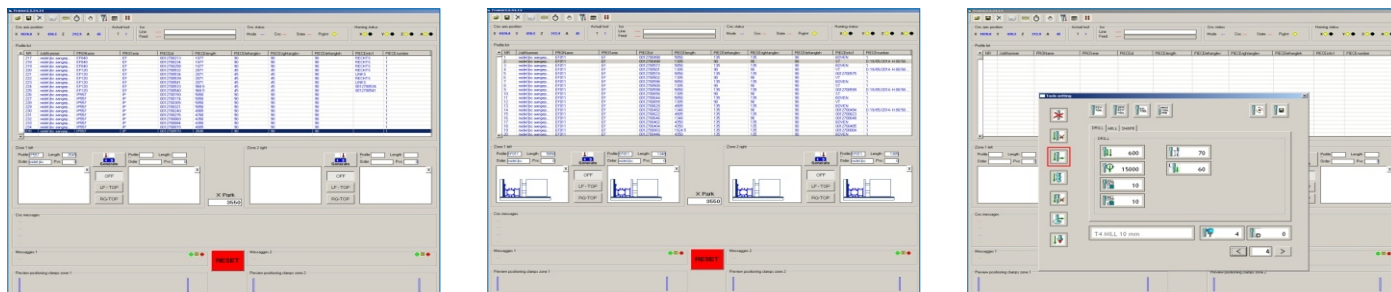


FRAME

Software to manage working lists for machining centers with 3 and 4 axes. The software has been designed for quick use by the barcode reader. The product FRAME, dedicated to the field of windows and doors, can also be used in industrial sectors due to its versatility.

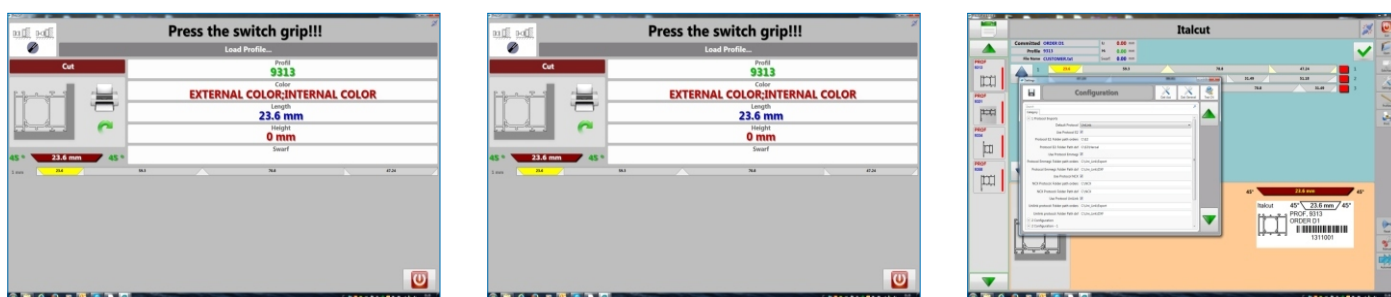
Developed to facilitate the use of machines with double zone function, it has also been set to monitor and provide useful information for those responsible of the production. Its use makes it easy to manage important production batches and it is also an indispensable tool for the organisation of smaller production.



ITALCUT

It's a software designed to simplify the management of cutting lists for double head miter saws. Italcut allows you to manage both manual and automatic cutting lists divided in bars and profiles that can be optimized through the dedicated menu. The management of also bar code heights and profiles, including probes, is automatic by default, as well as the management of information for the most common CRM, for a production under control. The product is for WIN7 and higher operating systems and it is also available in a version for off-line office.

ITALCUT matters major formats exported by the most reputable software such as Schucal + LOGIKAL, etc. NCX.



The specifications and illustrations in this catalogue are only a guide, Dynamic Machines Services Sdn Bhd therefore reserves the right to make any modifications it deems necessary for technical or commercial reasons.